

国立がん研究センターにおける 生物統計家の活動と海外との連携

Biostatisticians' activities and collaboration with foreign investigators at National Cancer Center

Taro SHIBATA
Biostatistics Division,
Center for Research Administration and Support,
National Cancer Center



National Cancer Center

Est. 1962, one of six national centers in Japan

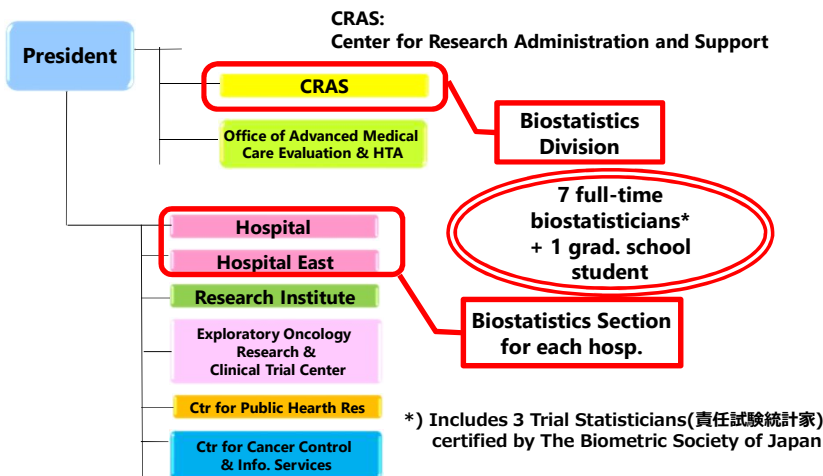
Missions

1. Discovering the fundamental causes of cancer and realizing its earliest diagnosis and prevention
2. Developing innovation in medical prevention, diagnosis and treatment
3. Establishing and making available the most advanced standard of care to all patients
4. Exploring and providing the best "cancer survivorship" for patients
5. Gathering and disseminating comprehensive cancer related information to the community
6. Talent development of all NCC staff members
7. Recommending new initiatives and policy to the government
8. Contributing to global society in collaboration with international organizations



2

Organization of NCC



3

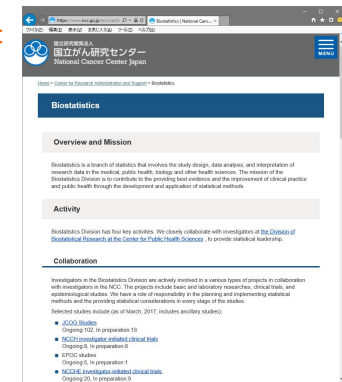
Mission & Activity of Biostatistics Div.

Mission

- To contribute to the providing **best evidence** and the **improvement of clinical practice and public health** through the development and application of statistical methods.

Activity

- Collaboration
- Consultation
- Training and education
- Methodological Research



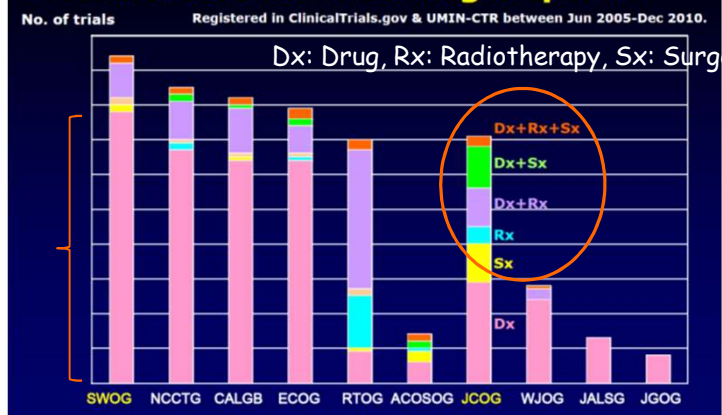
<https://www.ncc.go.jp/en/cras/biostatistics/> 4

Examples of our activity

- Collaboration, as a trial statistician
 - JCOG Studies: Ongoing 101, in preparation 18
 - NCCH investigator-initiated clinical trials: Ongoing 8, in preparation 8
 - EPOC Studies: Ongoing 5, in preparation 1
 - NCCHE investigator-initiated clinical trials: Ongoing 20, in preparation 9
(as of March 2017, includes ancillary studies of clinical trial, and IIT includes “Chicken”)
- 136 consultations/FY2016 (*not includes* consultation activity within above collaboration as a trial statistician)

5

Modalities used in each group trial

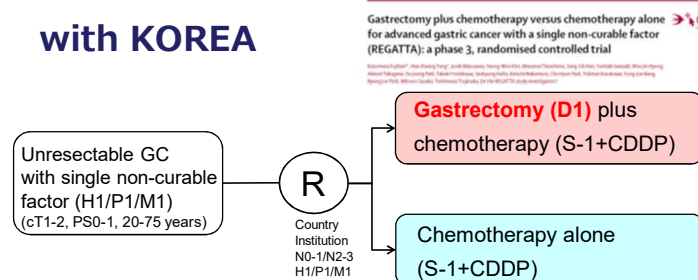


Kunieda F., Nakamura K. et al., J Clin Oncol 29: 2011 (suppl; abstr e16554).

6

JCOG0705/KGCA01 (REGATTA trial) with KOREA

UMIN000001012



- Primary endpoint: OS
- Planned accrual: n=330 (at least 110 pts from each country)
- Two data centers, One primary analysis (publication)

JCOG
Japan Clinical Oncology Group

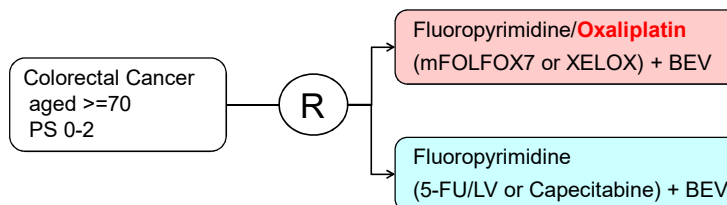
Slide by Dr.Ken-ichi NAKAMURA @ NCCH (partially modified)

7

JCOG1018 with NCCTG

UMIN000008866

NCCTG JCOG
Japan Clinical Oncology Group



- Primary endpoint in each country: PFS (n=380)
- Primary endpoint for combined analysis: OS (n=760)
- Two data centers
- Two primary analyses (publications) followed by pre-planned combined analysis

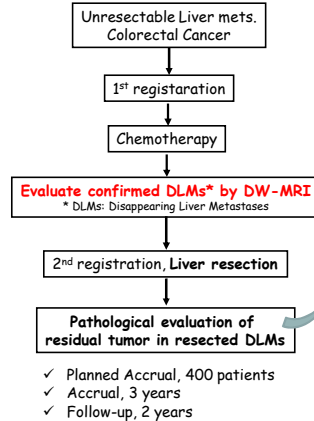
Slide by Dr.Ken-ichi NAKAMURA @ NCCH (partially modified)

8

DREAM study with EORTC

UMIN000024890

(EORTC-1527-GITC-IG/JCOG 1609INT)



Study Chair

- ✓ Serge Evrard (Institut Bergonie, France)
- ✓ Manabu Shiozawa (Kanagawa Cancer Center)

Participating sites

- ✓ Japan, 12 sites
- ✓ EU/US, 16 sites

Role of NCCH

- ✓ Liaison between Japan and EORTC HQ (Agreement, Site management, Study progress, Query assistance etc.)
- ✓ Project management on Japanese side
- ✓ Participation in the Steering Committee

Funding

- ✓ AMED (2016-) research fund on Japanese side

- One data center

- One primary analysis (publication)

Slide by Dr.Ken-ichi NAKAMURA @ NCCH (partially modified)

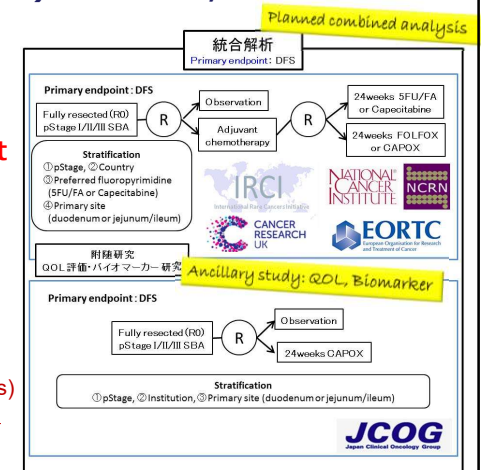
9

JCOG1502C(J-BALLAD) with IRCI, NCI etc.

UMIN000027280

Japanese trial -A Global Study To Evaluate The Potential Benefit of **Adjuvant Chemotherapy** for Small Bowel Adenocarcinoma [小腸腺癌]

- Primary endpoint: RFS (n=150)
- Two data centers
- Two primary analyses (publications) followed by pre-planned combined analysis



10

NCCH1607 with Korea, Taiwan & Singapore

UMIN000030816/NCT03423199

A Randomized, Double Blind, Placebo Controlled, Phase 3 Trial for Hormone Receptor Positive, HER2 Negative Locoregionally Recurrent or Metastatic Breast Cancer (NCCH1607, PATHWAY)

Placebo +Tamoxifen +/- Goserelin
VS
Palbociclib +Tamoxifen +/- Goserelin

- Investigator initiated "Chicken"
- Pfizer as a collaborator/sponsor
- One data center
- One primary analysis (publication)

11

Collaborative research with SWOG

– SWOG0124 and JCOG9511 –

- Combined analyses of safety data from two similar RCTs of
 - CDDP+VP16 vs CDDP+CPT-11 for ED-SCLC
- To explore the difference of AE/ADR between two trials

	CDDP+VP16		CDDP+CPT-11	
	JCOG9511	SWOG0124	JCOG9511	SWOG0124
	n=77	n=276	n=75	n=278
Neutropenia	92%	66%	65%	32%
Leukopenia	53%	33%	27%	17%
Anemia	32%	13%	28%	6%
Platelets	18%	15%	5%	4%
Infection	4%	16%	5%	11%
Vomiting	6%	9%	13%	10%
Diarrhea	0%	3%	16%	18%

from Lara et al. ASCO2007 abstract# 7524.

Lara et al. Cancer 116:5710-5715, 2010.

12

Methodological Projects with Foreign Investigators

- **Statistical methods in studying etiologic heterogeneity among disease subtypes**
 - Motivated by large prospective cohort studies with retrieving tumor tissues from incidence cancer patients
 - A cancer can be classified into subtypes by molecular and pathological features
 - Epidemiological research questions may be whether disease subtypes have similar or distinct etiology? which are the etiologically distinct subtypes?
 - e.g., smoking moderately increases the risk of overall CRC. Some evidence shows that smoking may increase the risk of BRAF-mutated CRC, but not be associated with BRAF wild-type CRC.
- **Statistical issues include:**
 - Developing statistical models to address those questions
 - Study design consideration
 - Missing data problems on molecular data etc...

13

Collaborative Research Activities

- **Specific activities:**
 - Writing research papers together
 - Proposed and organized Invited Session in ENAR spring meeting
 - Skype meeting as appropriate
 - a short catch-up, usually once a month
- **Preparation for submitting NIH grant application**
 - Have formal subcontract agreement between PI's institute (US) and NCC
 - Including budget plan for the activities

14

Collaboration between JCOG & EORTC

A new global partnership to improve surgical care: EORTC 1527 DREAM opens

From a Comic Opera to Surcare an Open Letter to Whom Clinical Research in Surgery Is a Concern
Announcing the Launch of SURCARE

Serge Evrard, MD, PhD,* Ricardo Andújar, MD, FRCS,* Grégoire Pinton, MD, DSc, FRCS,* Carmela Caballero, MD,† Kozo Kataoka, MD,† Devleken Fontijn, MD,† Laurence Collette, PhD, MSc,† Kenichi Nakamura, MD,† Haruhiko Fukuda, MD,† and Denis Lacombe, MD†

(Evrard S et al. Ann Surg 2016)

Short Communication
Collaboration between EORTC and JCOG—how to accelerate global clinical research partnership
Kozo Kataoka^{1,*}, Kenichi Nakamura², Carmela Caballero³, Serge Evrard⁴, Anastassia Negrouk⁵, Manabu Shiozawa⁶, Laurence Collette⁷, Haruhiko Fukuda⁸, and Denis Lacombe⁹

(Kataoka K et al. JJCOC2016)

<http://www.eortc.org/c/news/>

- SURCARE program (Surgical QC/QA program)
- Exchange program for young investigators
- JCOG-EORTC international symposium (Dec 2017)
- New study concept discussed in gastric cancer & pathology

Slide by Dr.Ken-ichi NAKAMURA @ NCCH

15

European and Japanese Clinical Research Organisations Meet to Collaborate on Future Studies in Cancer.

1 FEB 2018

On 2nd December 2017, at the National Cancer Center Hospital in Japan, EORTC (European Organisation for Research and Treatment of Cancer) and JCOG (Japan Clinical Oncology Group) convened to discuss common scientific strategies and unmet needs that could be translated into potential clinical trials.

Related News

PRESS RELEASE: Cancer survivors need better support to get jobs and access loans, say researchers

1 MAR 2018

Soft chemotherapy is very effective in older patients when added to targeted treatment in an aggressive breast cancer subtype

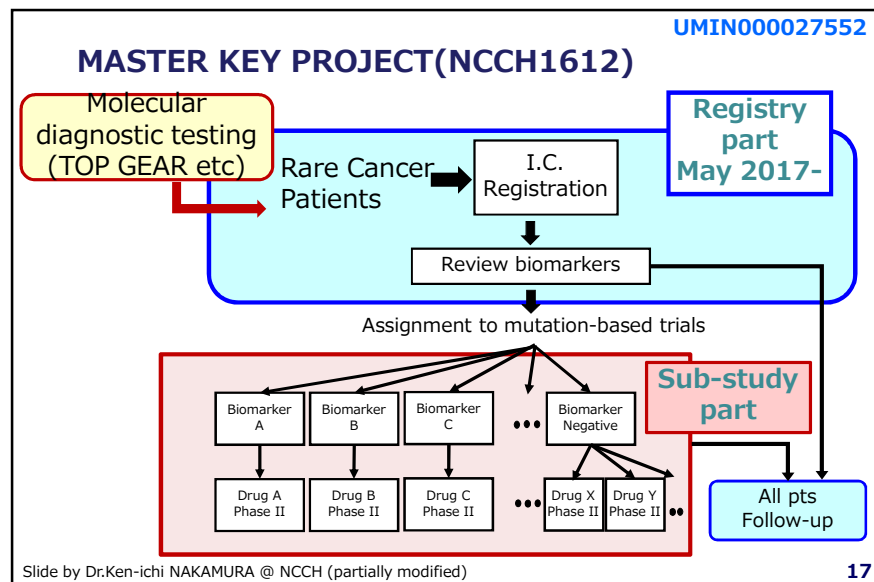
12 FEB 2018

PRESS RELEASE: 1 out of 3 men with breast cancer does not receive adequate treatment

2 FEB 2018

<http://www.eortc.org/blog/2018/02/01/european-and-japanese-clinical-research-organisations-meet-to-collaborate-on-future-studies-in-cancer/>

16



17

Summary

- **Strength**
 - Supportive environment, e.g. mind of clinicians, for biostatisticians
 - Many clinical trials are ongoing or in-preparation
 - Experience of multi-modality, non-pharmaceutical clinical trials
 - Network of international collaboration
- **Perspective**
 - New framework for clinical trial, i.e. collaboration with basic scientists, informaticians, outreach specialists etc.

18